


Contents

Click on a heading to be taken to that topic

How To: Check the Browser You Are Using on NJMMIS.com.....	2
How To: Verify What Browser You Are Using.....	3
Internet Explorer (all versions)	3
Chrome (Windows)	4
Firefox (Windows).....	7
How To: Turn Off Enterprise Mode in Internet Explorer 11	11
How To: Turn Off Compatibility View Settings in Internet Explorer 11	13
How To: Turn on TLS (Windows).....	16
How To: Confirm if the NJMMIS Website is controlled by Compatibility Settings in a Windows Group Policy.....	18
TLS 1.2 Noncompliant Browser Error Screenshots	22
Site Requirements Details for TLS 1.2 Supported Browsers	25
For More Technical Details about TLS 1.2.....	26

How To: Check the Browser You Are Using on NJMMIS.com

Click the “Site Requirements” link on the NJMMIS portal or use <https://www.njmmis.com/browserCheck.aspx> and the web page will show the browser type and version number you are using. If it shows an unsupported browser, you will not be able to use NJMMIS.com.

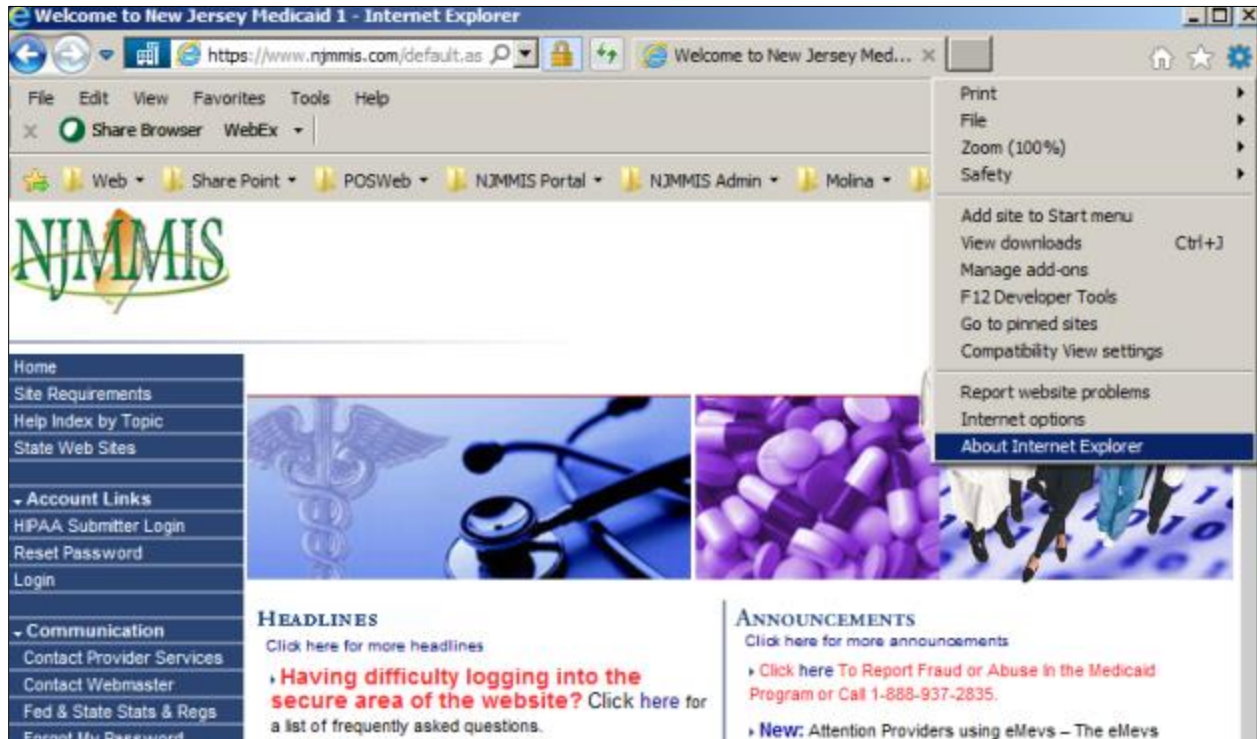


Home	You are currently using Browser version: InternetExplorer11
Site Requirements	
Help Index by Topic	
State Web Sites	
Account Links	You may use any of the following web browsers to access the New Jersey Medicaid Site:
HIPAA Submitter Login	<ul style="list-style-type: none">• Microsoft Internet Explorer 11• Mozilla Firefox 27+• Apple Safari 7+• Google Chrome 31+
Reset Password	
Login	
Communication	Note:
Contact Provider Services	Your browser must be configured to accept cookies. A screen resolution of at least 600 x 800 is recommended.
Contact Webmaster	Click here for instructions on how to resolve issues with Enterprise Mode in Internet Explorer 11.
Fed & State Stats & Regs	
Forgot My Password	
Provider Directory	
Provider Enrollment Application	Browser Upgrade Links

How To: Verify What Browser You Are Using

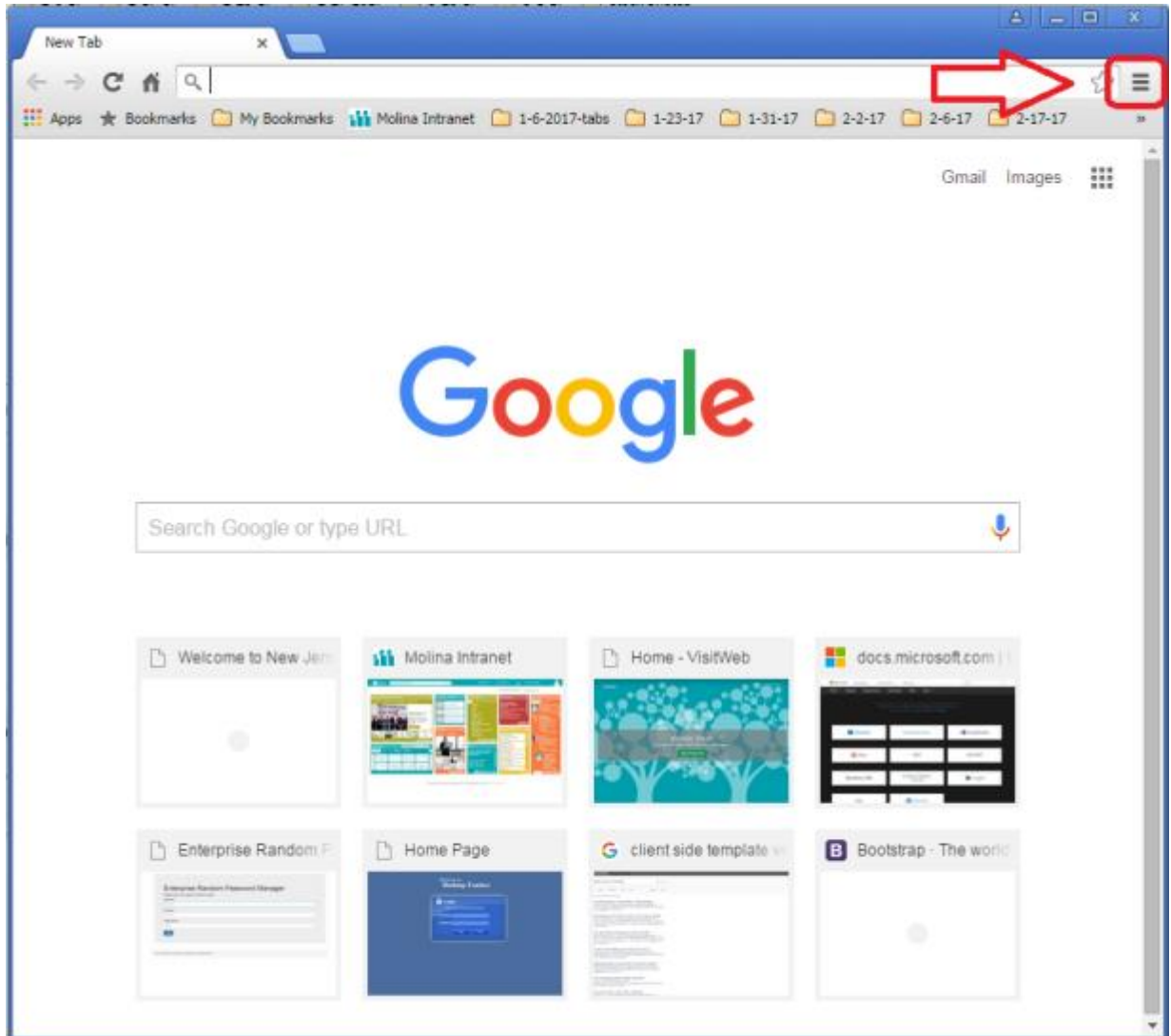
Internet Explorer (all versions)

Click the “About Internet Explorer” submenu item under the “Tools” menu to check the Internet Explorer browser version.

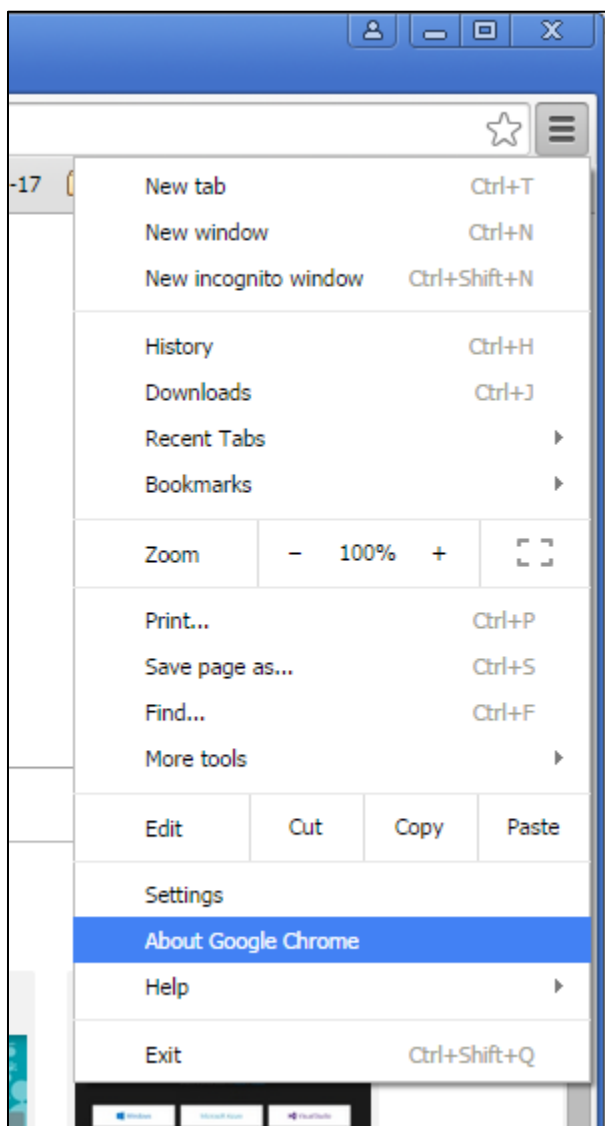


Chrome (Windows)

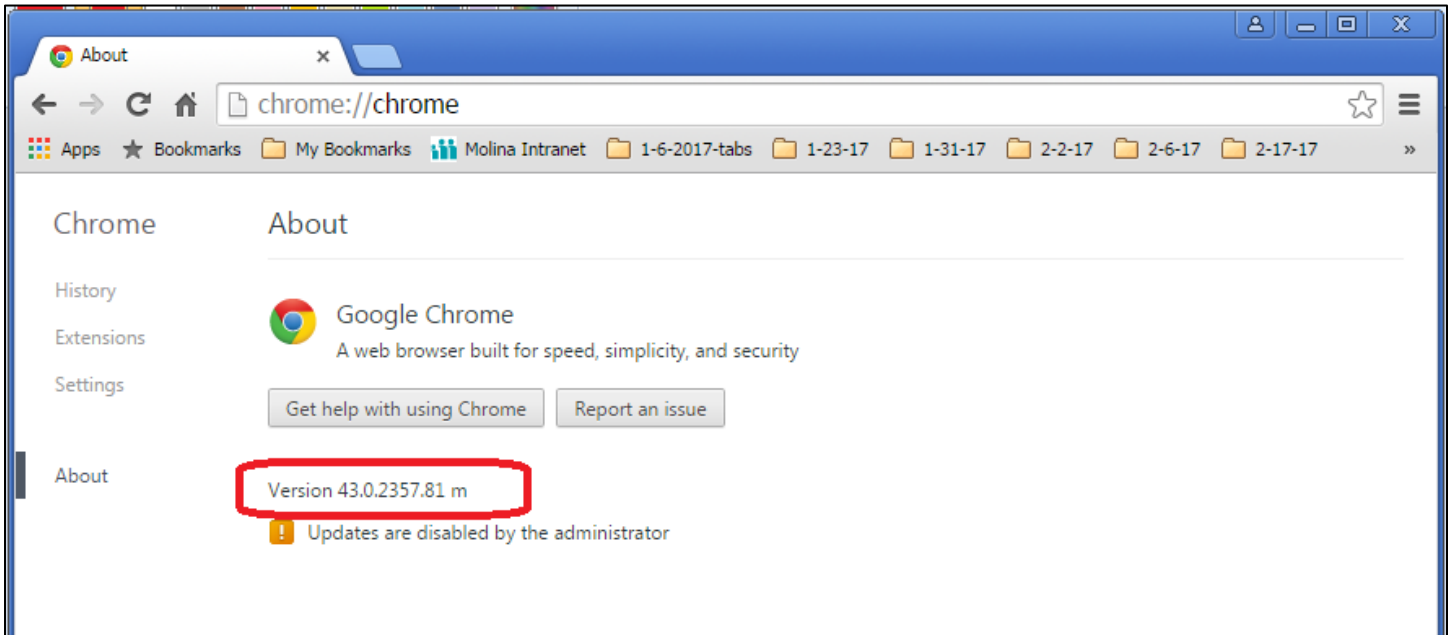
Step 1 - Click on the menu icon in the upper right corner of your browser



Step 2 - Click on “About Google Chrome”

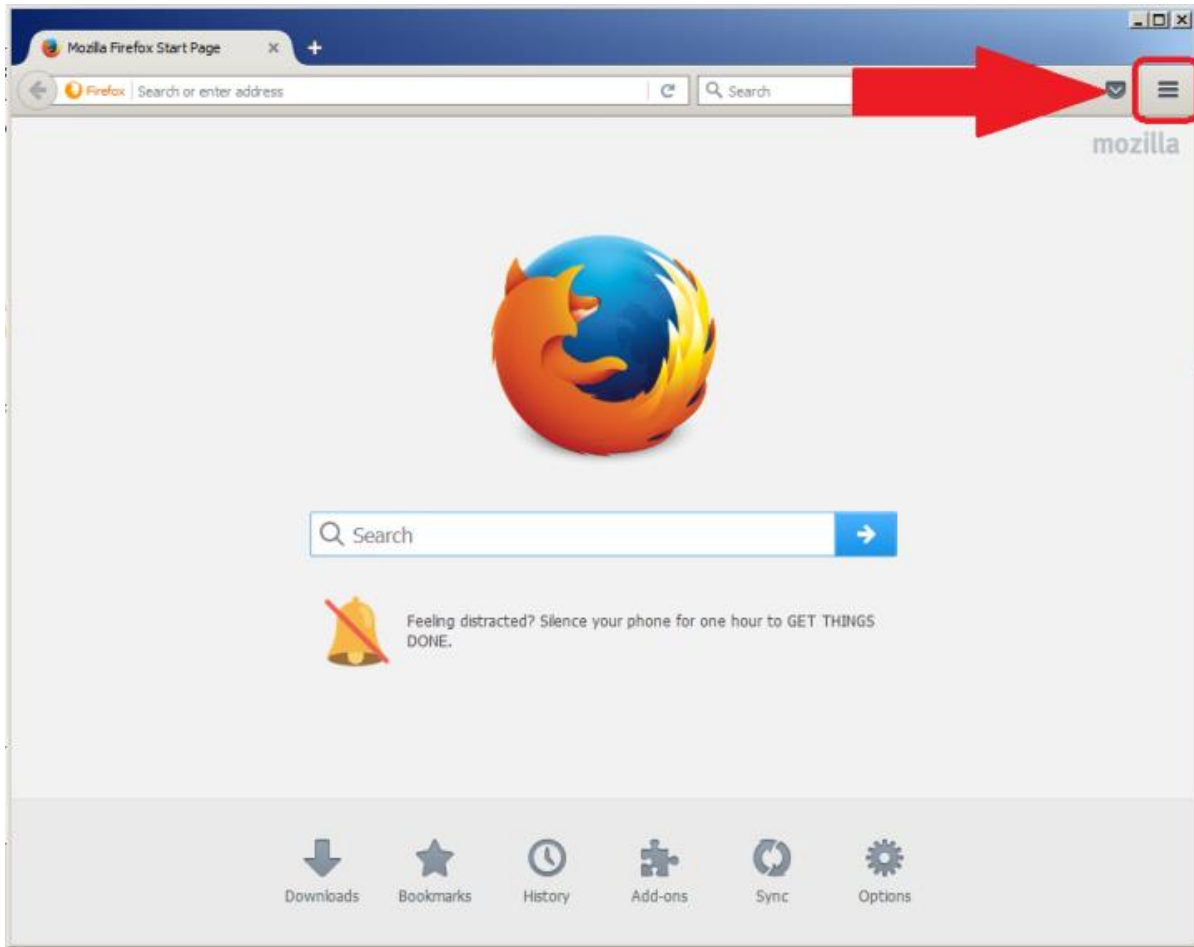


Step 3 - Verify the version shown with our requirements

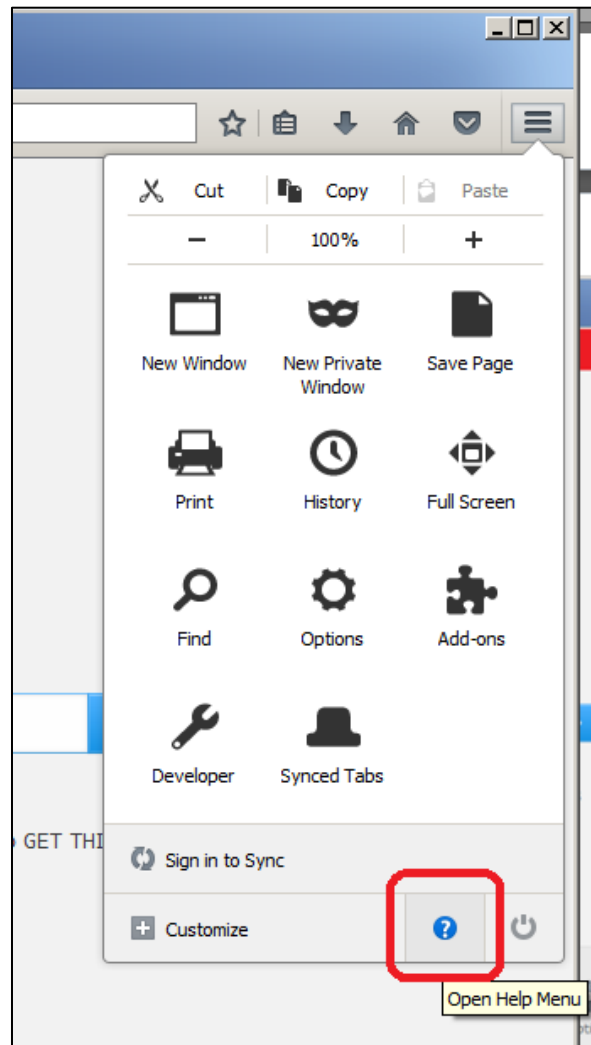


Firefox (Windows)

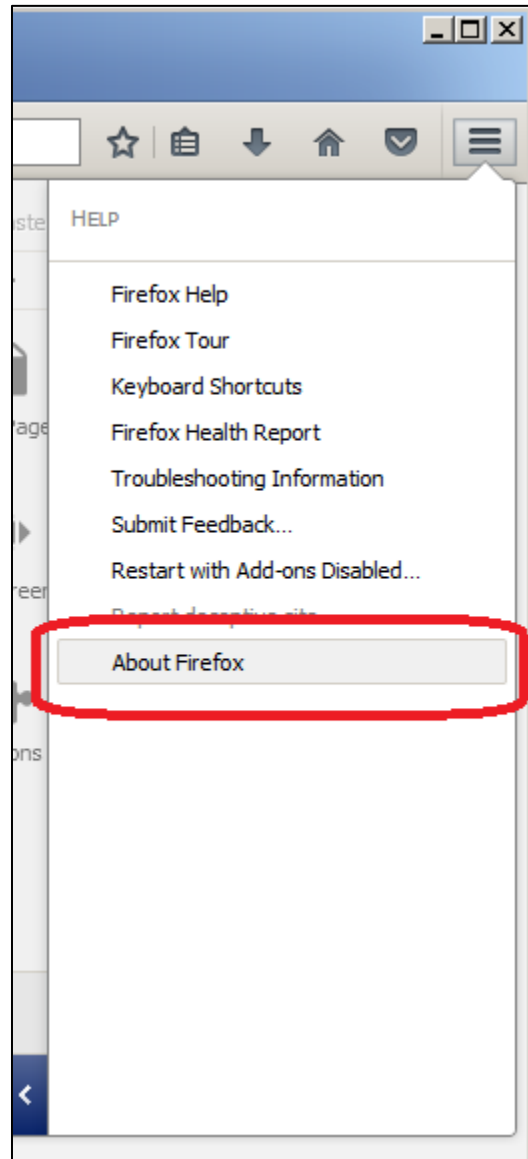
Step 1 - Click on the menu icon in the upper right corner of your browser



Step 2 - Click on the “Help” menu button






Step 3 - Click on "About Firefox"



Step 4 - Verify the version shown against our requirements

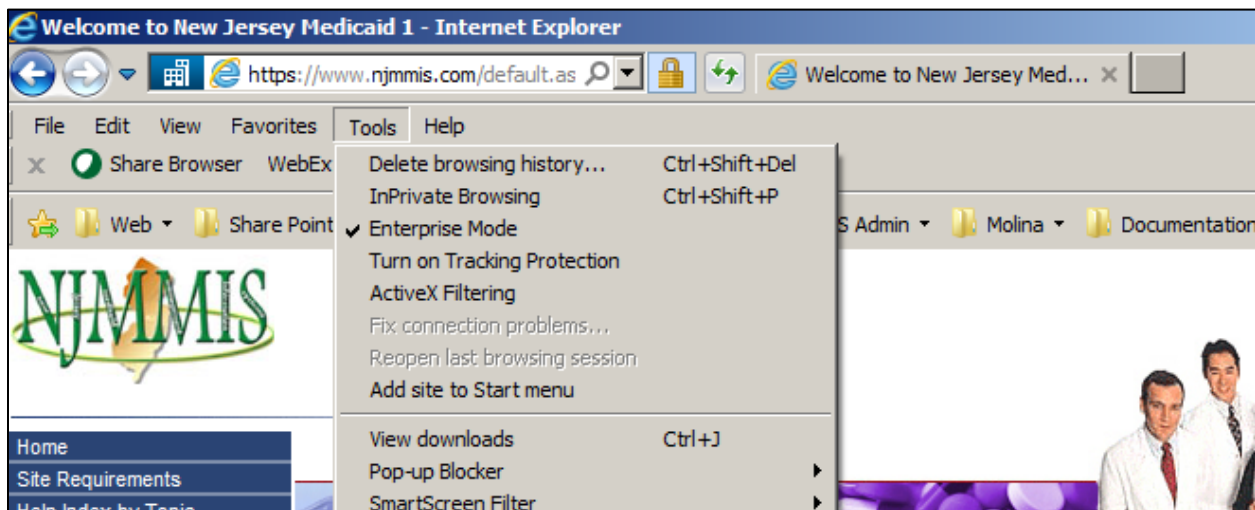


How To: Turn Off Enterprise Mode in Internet Explorer 11

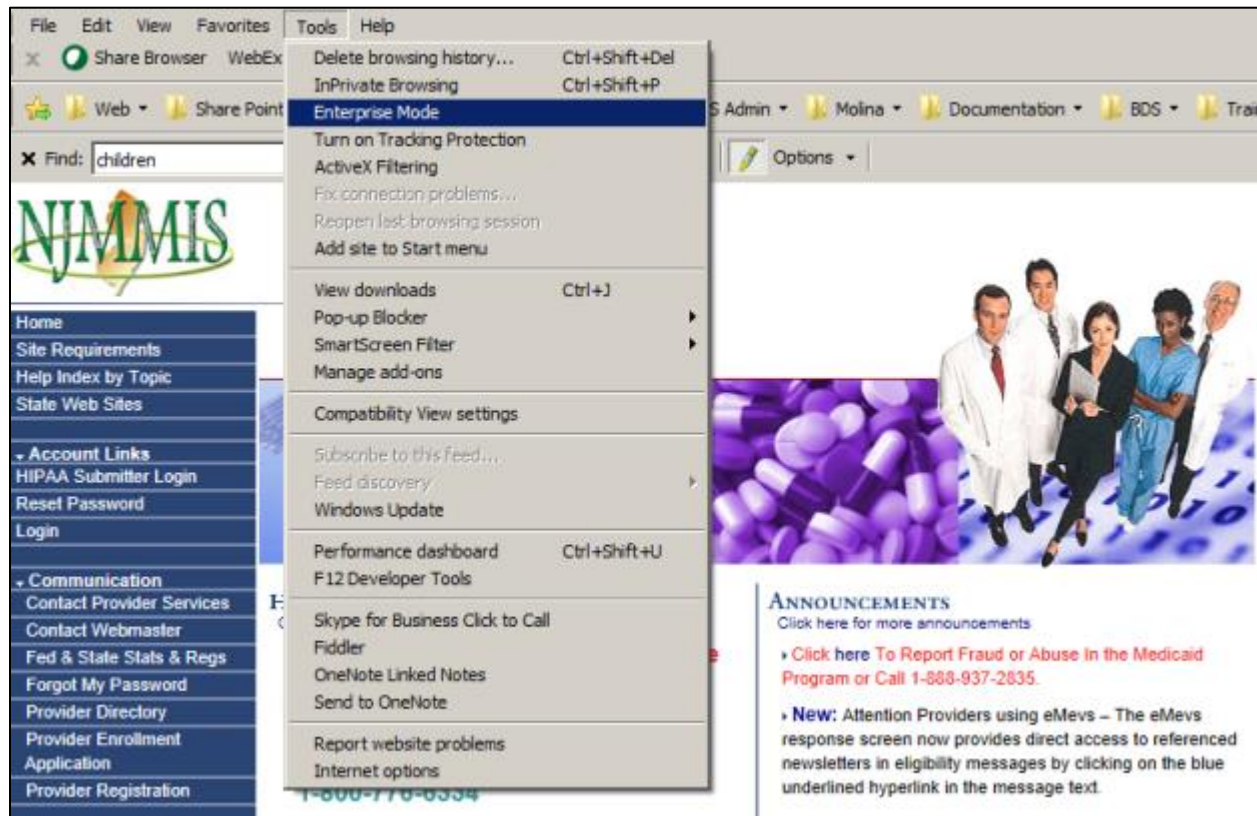
If **Enterprise Mode** is on, Internet Explorer will show one small icon  next to  in the address bar. By clicking , your browser will show:



In the "Tools" menu, **Enterprise Mode** can be turned on or off by clicking "Enterprise Mode". In the following image, Enterprise Mode is turned on; it is required to be turned off.



Enterprise Mode is turned off in the following screen, which is required for NJMMIS website.



If **Enterprise Mode** is not available in your IE 11 under “Tools”, your network administrator may have used a “Group Policy” setting to configure the options for you. Contact your administrator or your help desk for assistance.

How To: Turn Off Compatibility View Settings in Internet Explorer 11

If you are using Internet Explorer 11 for NJMMIS.com but getting “your browser is not supported” message and “Site Requirements” link on the NJMMIS portal shows not IE11 but IE7 or IE8, you are using an unsupported browser using Internet Explorer 11 by compatibility settings. Please remove njmmis.com site from compatibility view settings to fix this issue.

<https://www.njmmis.com/default.aspx>:



Home
Site Requirements
Help Index by Topic
State Web Sites
Account Links
HIPAA Submitter Login
Reset Password
Login

Your browser is not supported.

Please see our [site requirements](#) for a list of supported web browsers.

<https://www.njmmis.com/browserCheck.aspx>:



Home
Site Requirements
Help Index by Topic
State Web Sites
Account Links
HIPAA Submitter Login
Reset Password
Login
Communication
Contact Provider Services
Contact Webmaster
Fed & State Stats & Regs
Forgot My Password

You are currently using Browser version: IE7

You may use any of the following web browsers to access the New Jersey Medicaid Site:

- Microsoft Internet Explorer 11
- Mozilla Firefox 27+
- Apple Safari 7+
- Google Chrome 31+

Note:

Your browser must be configured to accept cookies. A screen resolution of at least 600 x 800 is recommended.

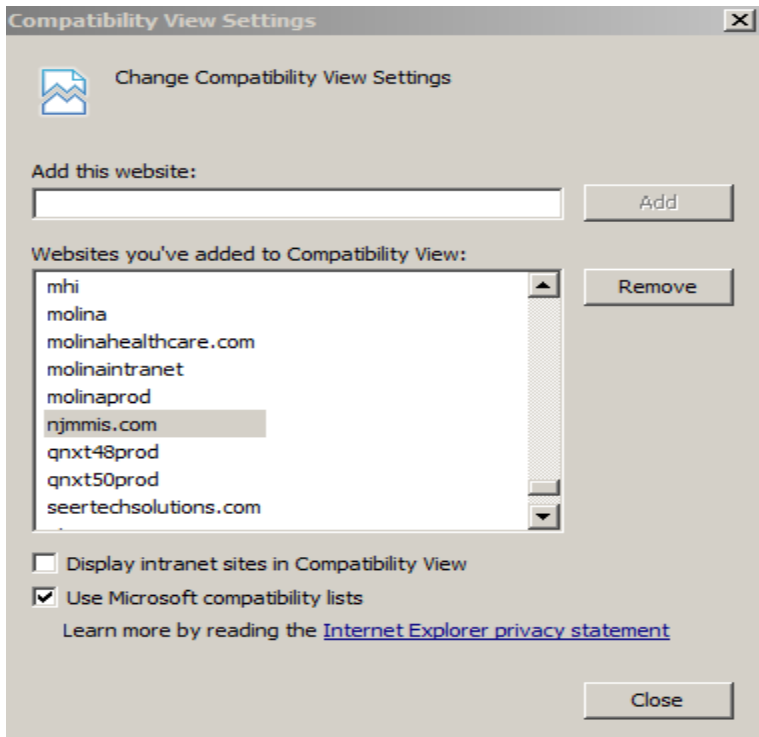
Click "compatibility view settings" under Tools:

The screenshot shows an Internet Explorer browser window titled "Welcome to New Jersey Medicaid 2 - Internet Explorer". The address bar shows the URL "https://www.njmmis.com/". The Tools menu is open, and "Compatibility View settings" is highlighted. The website content includes a navigation menu on the left with categories like Home, Account Links, Communication, and Information. The main content area features a banner image of medical professionals and a section titled "ANNOUNCEMENTS" with several news items.

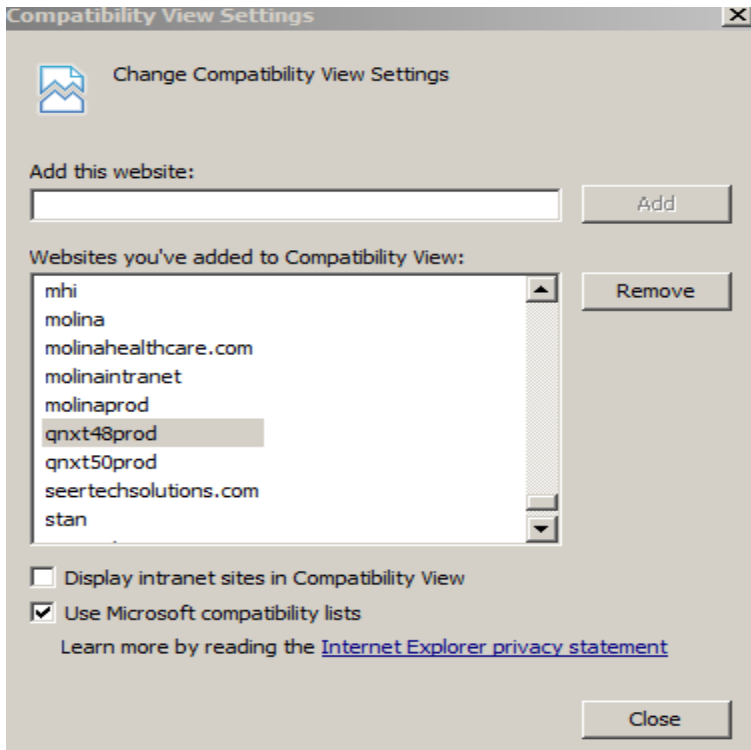
ANNOUNCEMENTS
Click here for more announcements

- Click here To Report Fraud or Abuse In the Medicaid Program or Call 1-888-937-2835.
- New:** Attention Provider of Adult Medical Day Care Services - The NJ Medicaid Fraud Division will be hosting a training for Adult Medical Day Care providers on June 1, 2017. Click here for more information about the goals for the training session.
- New:** Effective immediately, Molina Medicaid Solutions will no longer offer Imprinted Forms. We will continue to supply all forms previously available, but will discontinue the imprinting directly on the form. You can continue to request forms via the NJMMIS or through the Provider Enrollment center.

If njmmis.com has been added to Compatibility View sites, please delete it by clicking Remove button.

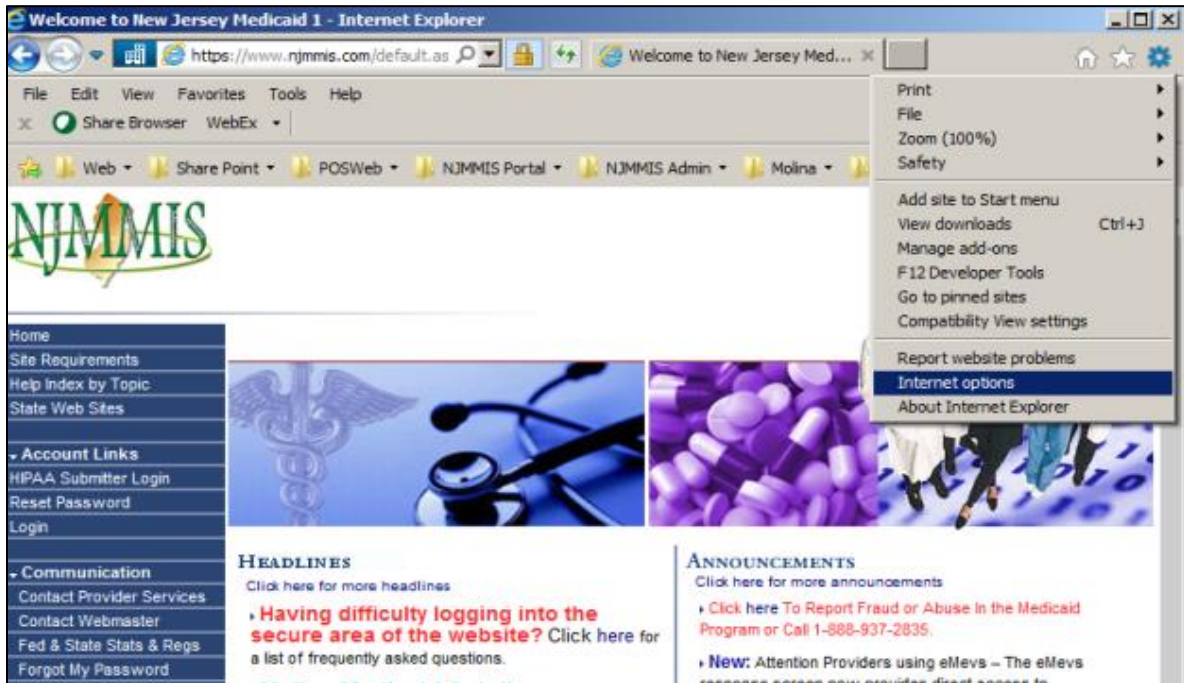


Please make sure that njmmis.com site not shown under Compatibility View sites.



How To: Turn on TLS (Windows)

Click the “Internet Options” menu item under “Tools” in Internet Explorer:



Click “Advanced”, go to the “Security” settings, and make sure that the “Use TLS 1.2” checkbox is checked.

Welcome to New Jersey Medicaid 1 - Internet Explorer

https://www.njmmis.com/default.as

File Edit View Favorites Tools Help

Share Browser WebEx

Web Share Point

NJMMIS

- Home
- Site Requirements
- Help Index by Topic
- State Web Sites
- Account Links
 - HIPAA Submitter Login
 - Reset Password
 - Login
- Communication
 - Contact Provider Services
 - Contact Webmaster
 - Fed & State Stats & Regs
 - Forgot My Password
 - Provider Directory
 - Provider Enrollment Application
 - Provider Registration
- Information
 - Approved Vendor List
 - Billing Supplements / Training Packets
 - Recent Newsletters

Internet Options

General Security Privacy Content Connections Programs Advanced

Settings

- Enable Integrated Windows Authentication*
- Enable native XMLHTTP support
- Enable SmartScreen Filter
- Enable Strict P3P Validation*
- Send Do Not Track requests to sites you visit in Internet E
- Use SSL 2.0
- Use SSL 3.0
- Use TLS 1.0
- Use TLS 1.1
- Use TLS 1.2
- Warn about certificate address mismatch*
- Warn if changing between secure and not secure mode
- Warn if POST submittal is redirected to a zone that does n

*Takes effect after you restart your computer

Restore advanced settings

Reset Internet Explorer settings

Resets Internet Explorer's settings to their default condition. Reset...


You should only use this if your browser is in an unusable state.

Some settings are managed by your system administrator.

OK Cancel Apply

allows ICD-9 or ICD-10 codes from one year to be used with a grouper from another year, in determining the

documentation BDS



ements

d or Abuse In the Medicaid 2835.

using eMevs – The eMevs provides direct access to eligibility messages by clicking a link in the message text.

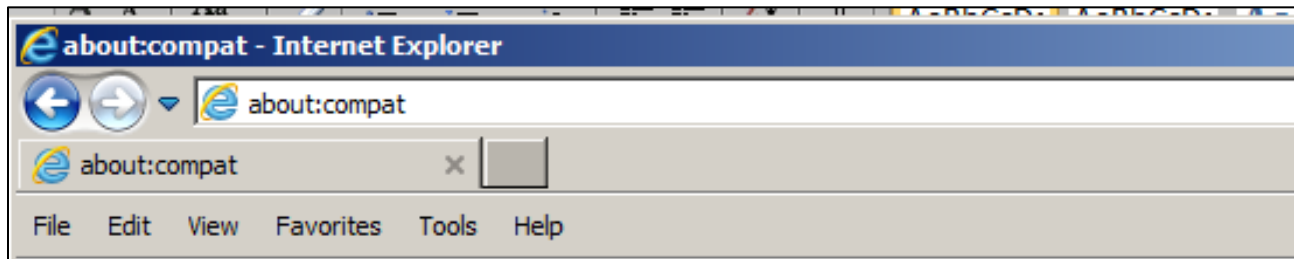
2017 NJ Medicaid/HMO Submission Deadline Schedule.

2017 Charity Care Claims

How To: Confirm if the NJMMIS Website is controlled by Compatibility Settings in a Windows Group Policy

Step 1:

Type in **about:compat** into the address bar in Internet Explorer 11 and then press the Enter/Return key.



Step 2:

On the right hand side of the page that appears, ensure that the following options are checked: **Enterprise Mode Site List**, **Enterprise Mode Site List (Local)**, **Microsoft Compatibility List**, **Compatibility List (local)**, **Enterprise Mode (Additional attributes)**.

Filter:

Search for a website or attribute:

example.com



Show websites, based on the list type:

Pick which Compatibility Settings List to view by clicking the boxes below.

Enterprise Mode Site List

Sites on this list are rendered using a modified browser configuration that emulates IE8, IE7, and the IE8 - IE11 document modes to help avoid the common compatibility problems associated with web apps written and tested on an older version of Internet Explorer. If you feel that a site should be removed from the list then please contact your system administrator.

Enterprise Mode Site List (local)

You added the sites on this list to your local Enterprise Mode Site List and they are rendered using IE8 Enterprise Mode. [Click here](#) to see how to remove a site from the list.

Microsoft Compatibility List

Sites on this list, with known compatibility problems, automatically render as if you are viewing them in a previous version of Internet Explorer. To get your site removed from this list, please e-mail IEPO@microsoft.com.

Compatibility List (local)

You added the sites on this list to your local Compatibility List and they are rendered using IE7 emulation. [Click here](#) to see how to remove a site from the list.

Additional attributes:

Pick the additional attribute(s) you want to add as new columns.

Enterprise Mode

Minimum layout width

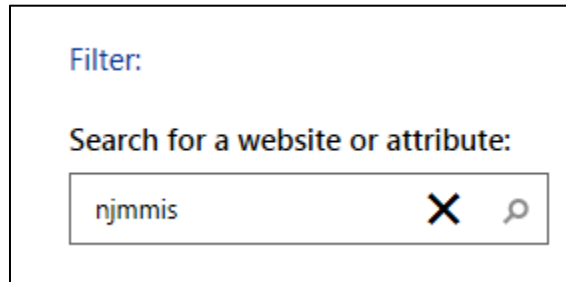
Exclude from back forward cache

Override X-UA-Compatible Meta tag

Create Element with Markup

Step 3:

In the filter search box on the right hand side of the page, type **njmmis** . The filter is not case sensitive.



The image shows a rectangular box representing a filter search interface. At the top left, the word "Filter:" is written in blue. Below it, the text "Search for a website or attribute:" is displayed in black. Underneath this text is a search input field containing the text "njmmis". To the right of the input field, there is a black "X" icon for clearing the search and a magnifying glass icon for executing the search.

Click the magnifying glass button to filter the list.

Step 4:

Review the results list. If the NJMMIS website (njmmis.com) appears in the list, your Internet Explorer may be controlled by your organization's Group Policy. Contact your system administrator for further assistance on removing the NJMMIS website from any centralized compatibility list.

Compatibility Settings

Review all of the websites included in the Microsoft Compatibility List, which is updated and maintained by Microsoft, and in the Enterprise Mode Site List, which if enabled is updated and maintained by your company. For more information please see our [test tools](#).

Included sites (1 number of results)

Domain ^	List Type	Document Mode	User Agent String	Additional Attributes	Enterprise Mode
🔍 site.njmmis.com	Enterprise Mode			1 attribute	IE8 Enterprise Mode

Filter:

Search for a website or attribute:

Show websites, based on the list type:

Pick which Compatibility Settings List to view by clicking the boxes below.

Enterprise Mode Site List

Sites on this list are rendered using a modified browser configuration that emulates IE8, IE7, and the IE8 - IE11 document modes to help avoid the common compatibility problems associated with web apps written and tested on an older version of Internet Explorer. If you feel that a site should be removed from the list then please contact your system administrator.

Enterprise Mode Site List (local)

You added the sites on this list to your local Enterprise Mode Site List and they are rendered using IE8 Enterprise Mode. [Click here](#) to see how to remove a site from the list.

Microsoft Compatibility List

Sites on this list, with known compatibility problems, automatically render as if you are viewing them in a previous version of Internet Explorer. To get your site removed from this list, please e-mail IEPO@microsoft.com.

Compatibility List (local)

You added the sites on this list to your local Compatibility List and they are rendered using IE7 emulation. [Click here](#) to see how to remove a site from the list.

Additional attributes:

Pick the additional attribute(s) you want to add as new columns.

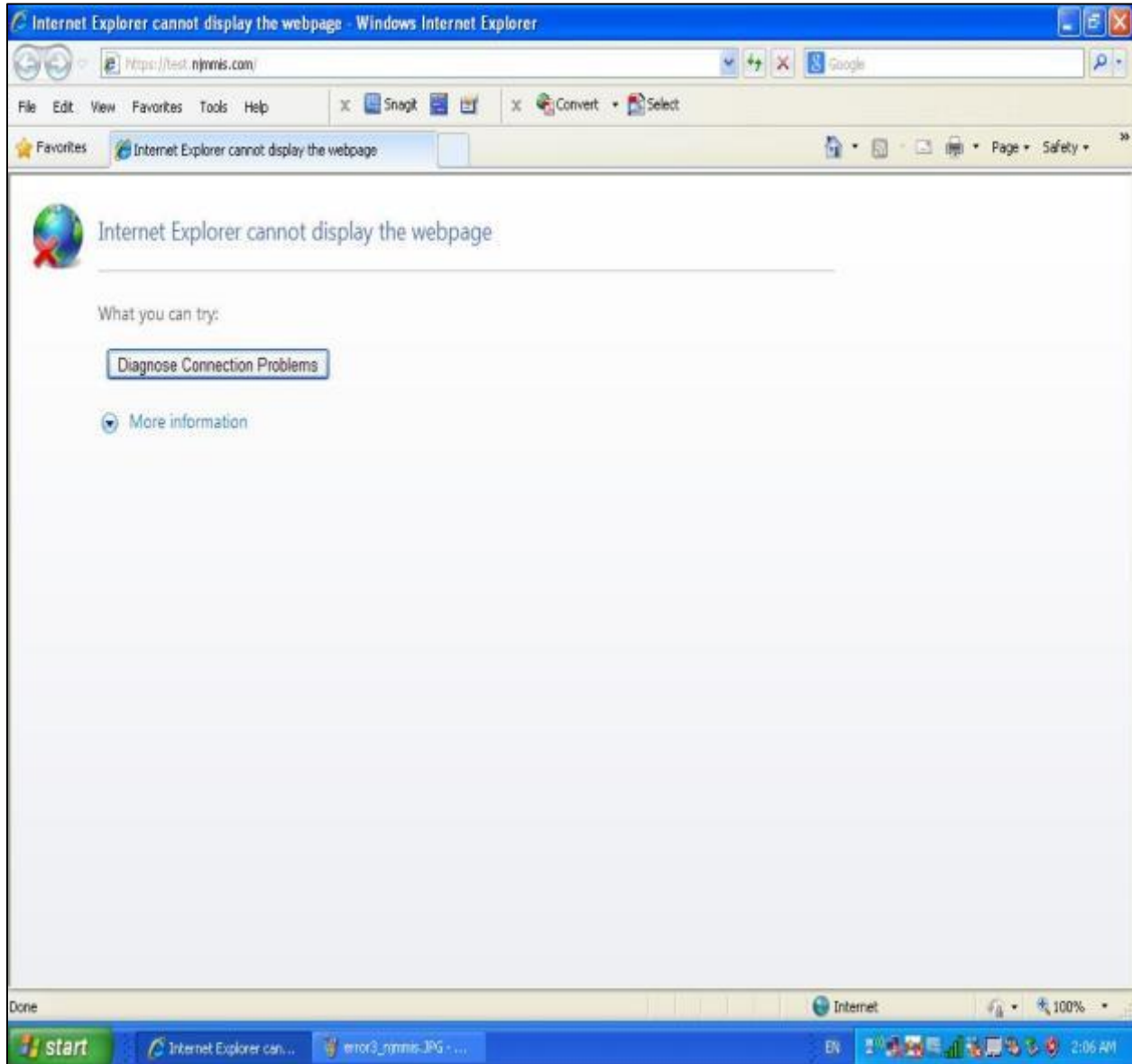
Enterprise Mode

Minimum layout width

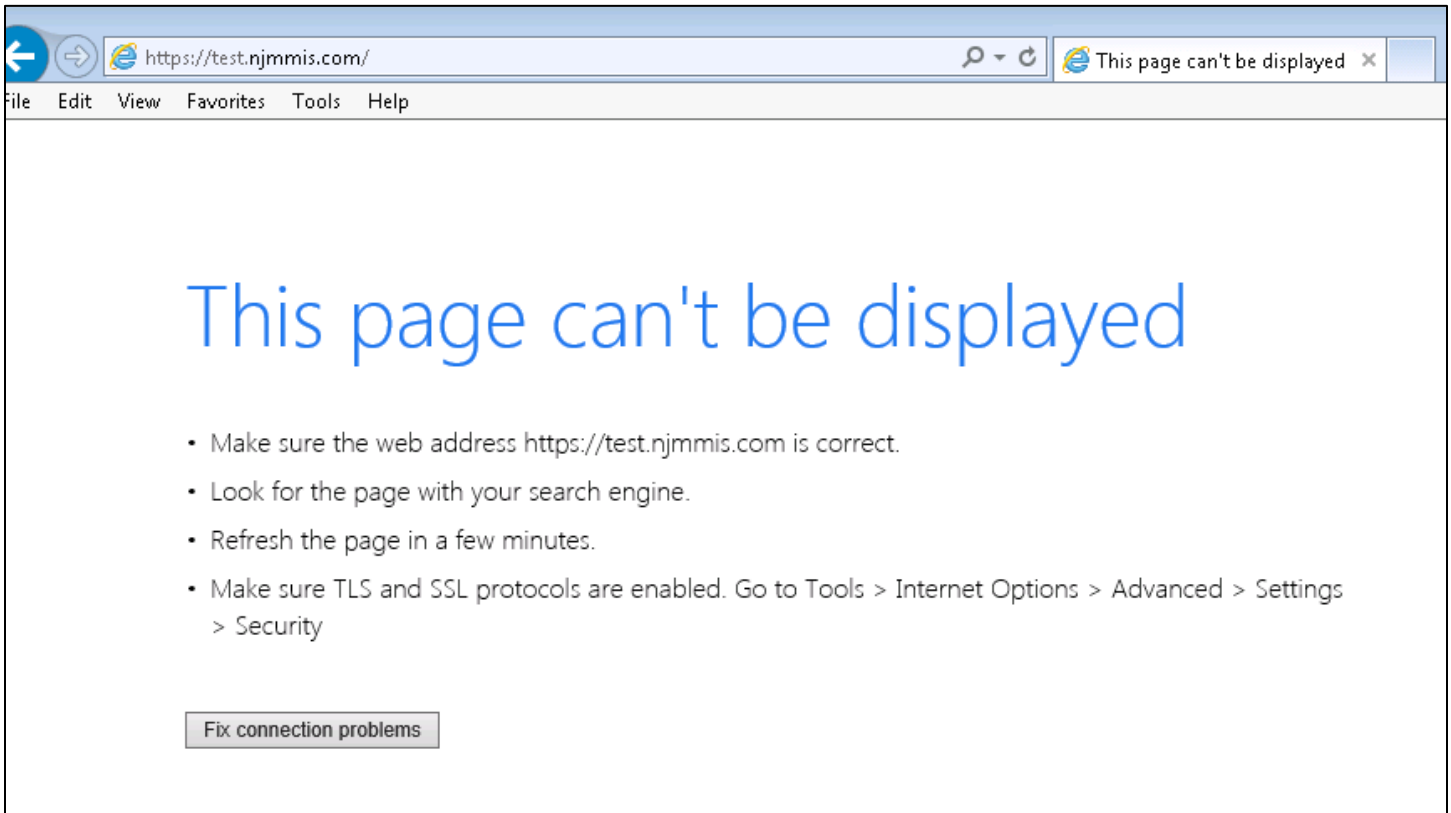
TLS 1.2 Noncompliant Browser Error Screenshots

If you are using an older browser, like Internet Explorer 6.0, Internet Explorer 7.0, Internet Explorer 8.0, or Internet Explorer 9.0, when accessing the NJMMIS website, you will receive one of the errors shown in the images below. Please upgrade your browser, or use one of the browsers listed in our site requirements page at <https://www.njmmis.com/browserCheck.aspx>.

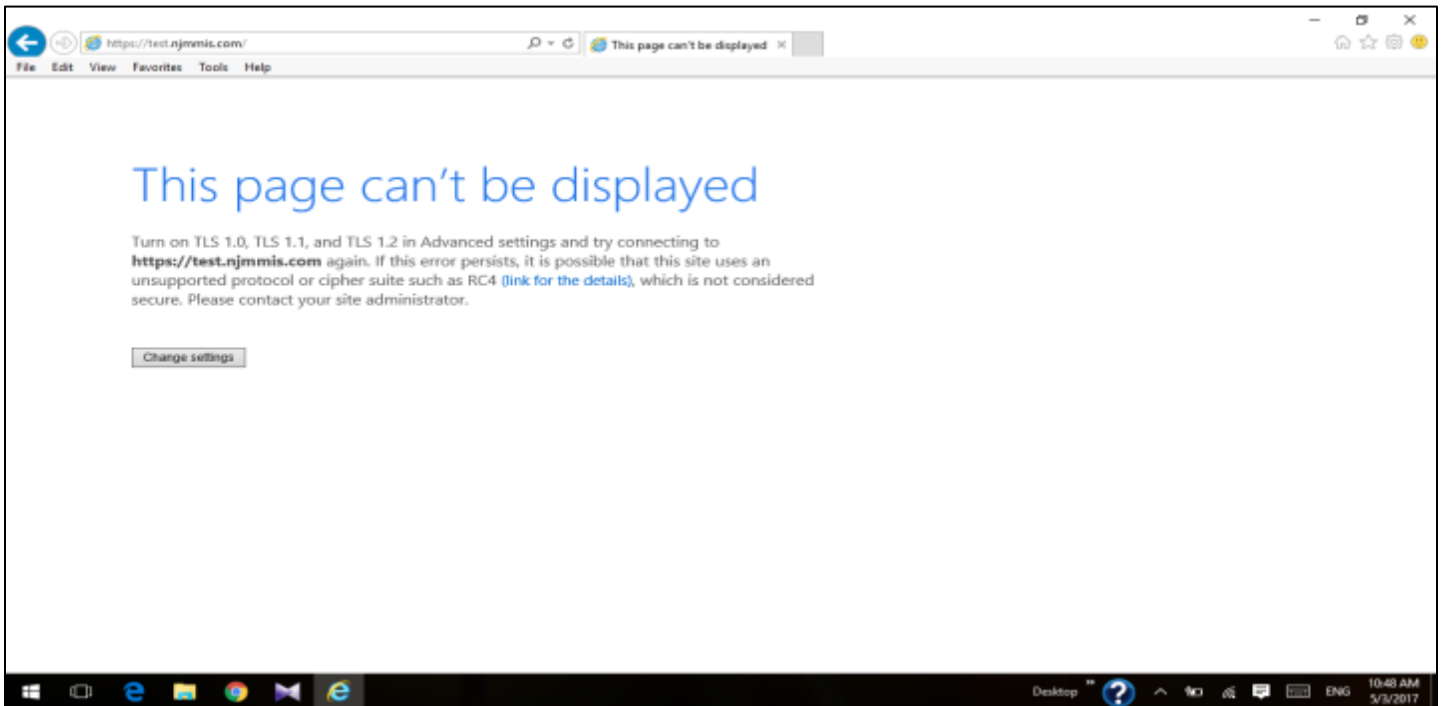
For Windows XP running any version of Internet Explorer



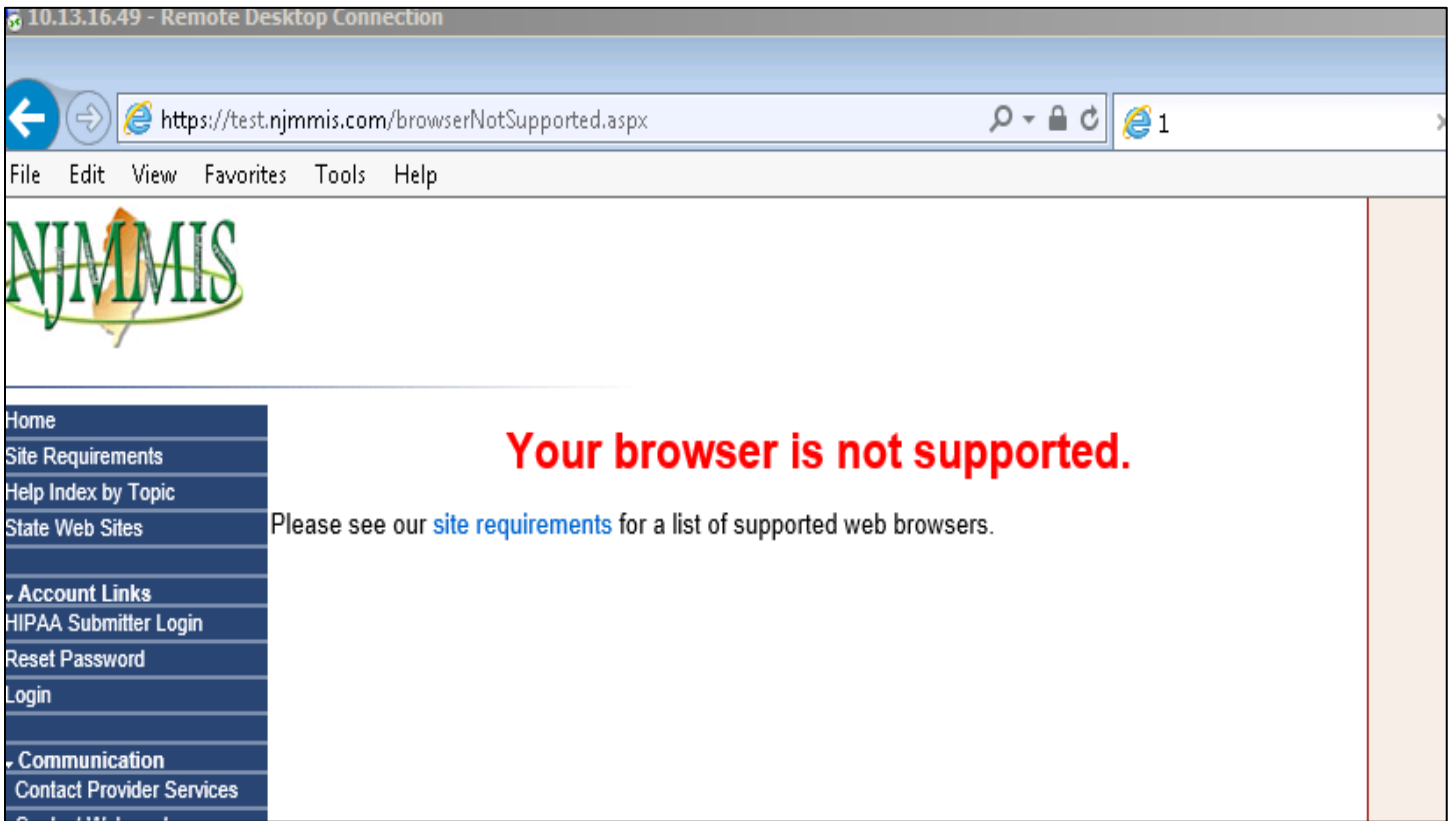
Internet Explorer 10.0 with the TLS 1.2 checkbox unchecked:



For Windows 8/10 with Internet Explorer 11 with TLS 1.2 checkbox unchecked:



For any unsupported NJMMIS.com internet browsers:



Site Requirements Details for TLS 1.2 Supported Browsers

Home

Site Requirements

Help Index by Topic

State Web Sites

Account Links

HIPAA Submitter Login

Reset Password

Login

Communication

Contact Provider Services

Contact Webmaster

Fed & State Stats & Regs

Forgot My Password

Provider Directory

Provider Enrollment Application

Provider Registration

Information

Approved Vendor List

Billing Supplements / Training Packets

Recent Newsletters

Edit Codes

FAQ

Forms & Documents

Physician Administered Drugs (UOM)

Rate and Code Information

Newsletters & Alerts

NJ State MAC

You are currently using Browser version: IE10

You may use any of the following web browsers to access the New Jersey Medicaid Site:


- Microsoft Internet Explorer 11
- Mozilla Firefox 27+
- Apple Safari 7+
- Google Chrome 31+


Note:


Your browser must be configured to accept cookies. A screen resolution of at least 600 x 800 is recommended. Click [here](#) for instructions on how to resolve issues with Enterprise Mode in Internet Explorer 11.


Browser Upgrade Links

If you need to upgrade to a new browser, click the links below to go to the Microsoft, Firefox, Safari or Chrome websites.

 [Microsoft Internet Explorer - Browser Upgrade](#)

 [Firefox - Browser Upgrade](#)

 [Safari - Browser Upgrade](#)

 [Chrome - Browser Upgrade](#)

For More Technical Details about TLS 1.2

- 1) https://en.wikipedia.org/wiki/Transport_Layer_Security
- 2) <https://www.howssmyssl.com/>